

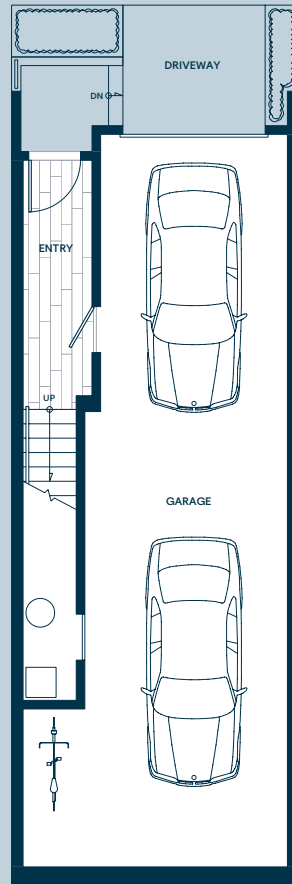
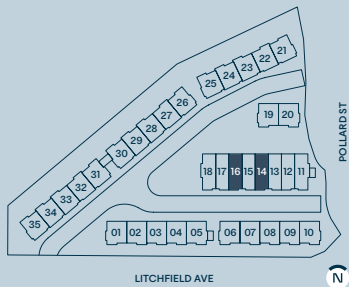
# Ab

3 Bedroom  
2.5 Bathroom

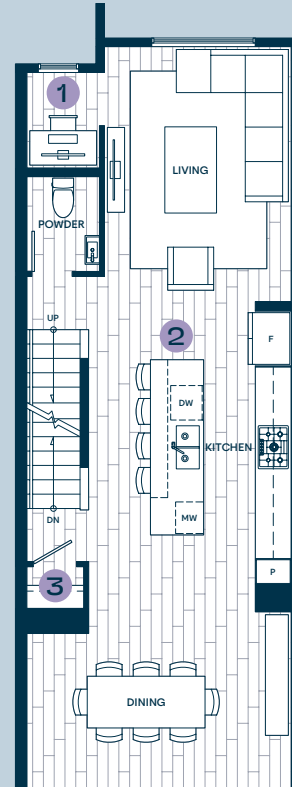
Interior 1,479 SF  
Outdoor 275-300 SF

Garage  
620 SF

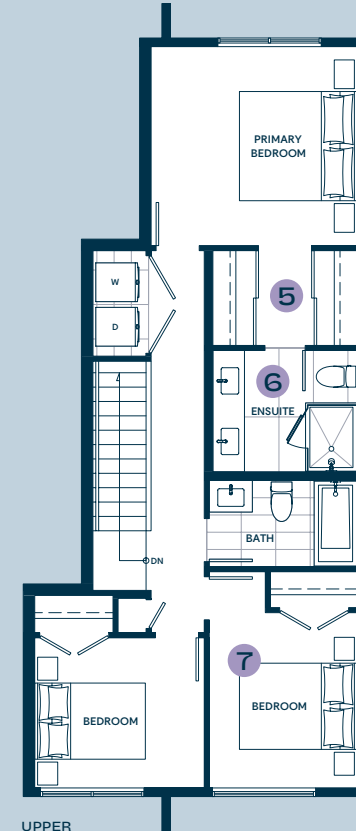
- 1 Dedicated work-from-home space off the living room.
- 2 Extra-long kitchen island with seating overhang and feature open shelving.
- 3 Millworked closet off the kitchen for extra storage.
- 4 Indoor-outdoor living space extending from the dining area.
- 5 Millworked walk-through closet space in the primary bedroom.
- 6 Tiled walls in ensuite bathrooms.
- 7 Generous secondary bedrooms sized for queen beds.



LOWER



MAIN



UPPER



MAIN

Developer reserves the right to make modifications to the floorplans, indoor & outdoor areas, unit numbers, and/or specifications without notice. Actual floorplans may be mirror image or have minor variations from the illustrations above. Views may include building architectural features/measurements are based on architectural areas and are not taken from the strata plan. This is not an offering for purchase. Any such offering can only be made with a Disclosure Statement. E&OE.



**TOWN'S**  
AT BURKE

