

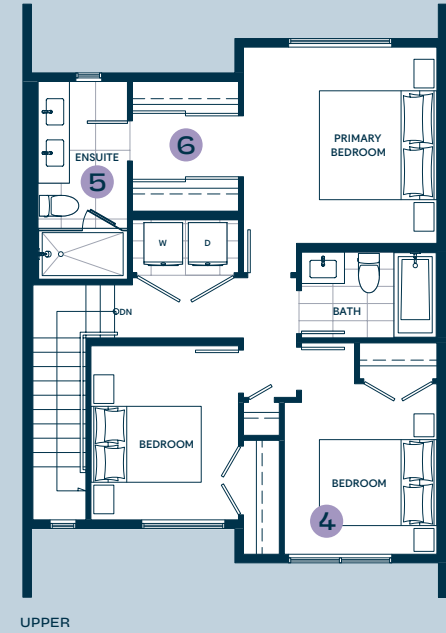
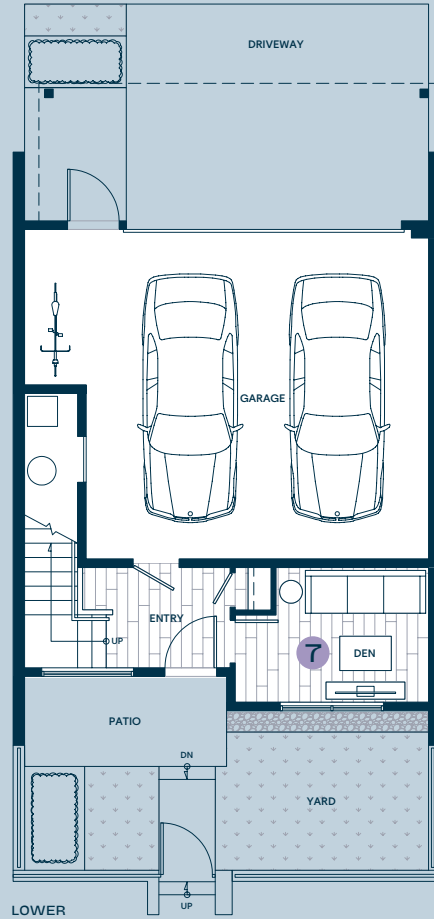
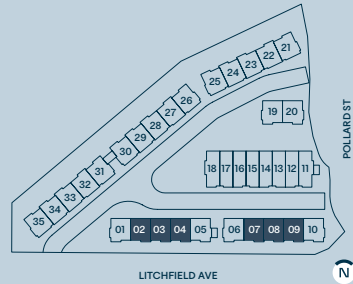
Ba

3 Bedroom + Den
2.5 Bathroom

Interior 1,553 SF Outdoor 360-380 SF

Garage 481 SF

- 1 Large L-shaped kitchen with feature open shelving and a generous kitchen island.
- 2 Millworked closet off the kitchen for extra storage.
- 3 Inward-facing balcony with some overlooking the central playground and outdoor amenity space.
- 4 Generous secondary bedrooms.
- 5 Tiled walls in ensuite bathrooms.
- 6 Millworked walk-through closet space in the primary bedroom.
- 7 Versatile den off the garage, ideal as a dedicated work-from-home space or playroom.



TOWN'S
AT BURKE

Developer reserves the right to make modifications to the floorplans, indoor & outdoor areas, unit numbers, and/or specifications without notice. Actual floorplans may be mirror image or have minor variations from the illustrations above. Views may include building architectural features/measurements are based on architectural areas and are not taken from the strata plan. This is not an offering for purchase. Any such offering can only be made with a Disclosure Statement. E&OE.